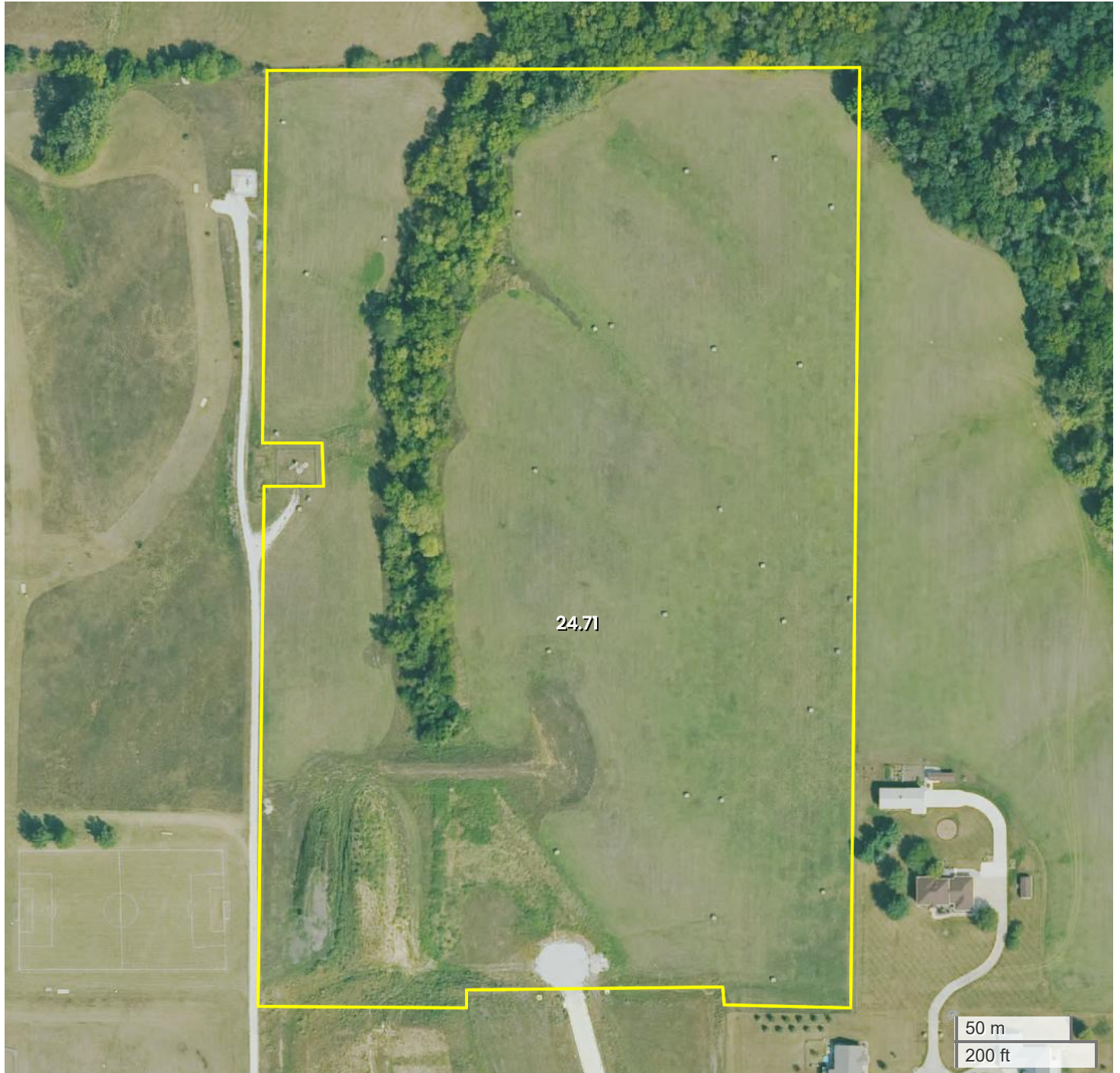




24.71 ACRES (24.72 AC TOTAL, 24.71 AC TILLABLE)

AERIAL MAP



Center: 41.030810, -93.320993

18-72N-21W

Chariton city Township

Lucas County, IA

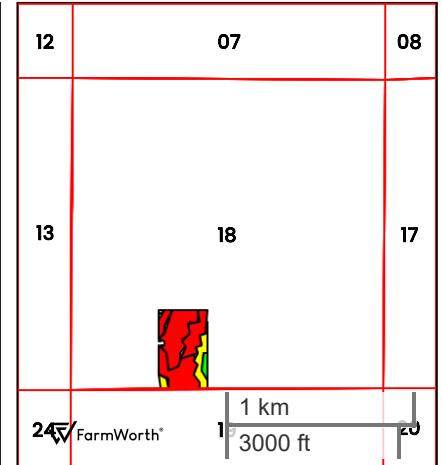
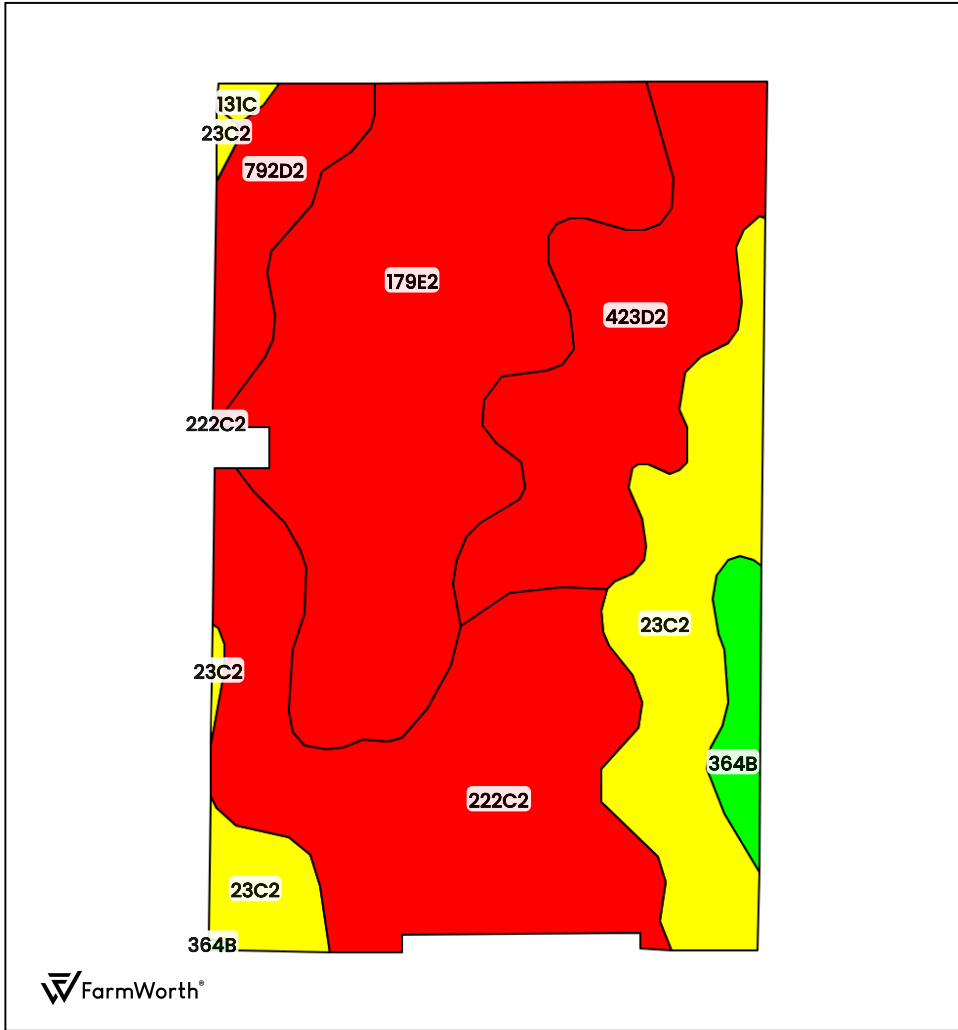


FarmWorth, LLC makes no representations or warranties, express or implied, as to the accuracy of any information, data, numerical values, boundaries, or any other information generated through the use of FarmWorth.com. User is solely responsible for independently investigating and determining all information provided through FarmWorth.com prior to use and waives any and all claims against FarmWorth, LLC for any inaccuracies or inconsistencies in the information and/or data.



24.71 ACRES (24.72 AC TOTAL, 24.71 AC TILLABLE)

TOTAL SOILS



County: Lucas County, IA
Location: 18-72N-21W
Township: Chariton city
Acres: 24.72
Date: 09/08/2025



Field borders obtained from Farm Service Agency
as of 2008

FarmWorth, LLC makes no representations or warranties, express or implied, as to the accuracy of any information, data, numerical values, boundaries, or any other information generated through the use of FarmWorth.com. User is solely responsible for independently investigating and determining all information provided through FarmWorth.com prior to use and waives any and all claims against FarmWorth, LLC for any inaccuracies or inconsistencies in the information and/or data.

Code	Description	Acres	% of field	IA CSR2	Overall NCCPI	Soil Class (Irr)	Soil Class (Non-Irr)	Drainage Class
179E2	Gara clay loam, 14 to 18 percent slopes, moderately eroded	8.35	33.78 %	23	62	-	6	Well drained
222C2	Clarinda silty clay loam, 5 to 9 percent slopes, moderately eroded	6.22	25.16 %	28	52	-	4	Poorly drained
423D2	Bucknell silty clay loam, 9 to 14 percent slopes, moderately eroded	4.07	16.46 %	6	62	-	4	Somewhat poorly drained
23C2	Arispe silty clay loam, 5 to 9 percent slopes, moderately eroded	4.06	16.42 %	62	76	-	3	Somewhat poorly drained
792D2	Armstrong clay loam, 9 to 14 percent slopes, moderately eroded	1.31	5.30 %	5	58	-	4	Somewhat poorly drained
364B	Grundy silty clay loam, 2 to 5 percent slopes	0.62	2.51 %	72	79	-	2	Somewhat poorly drained
131C	Pershing silt loam, 5 to 9 percent slopes	0.09	0.36 %	65	73	-	3	Somewhat poorly drained
Average:				28.3	62.0			

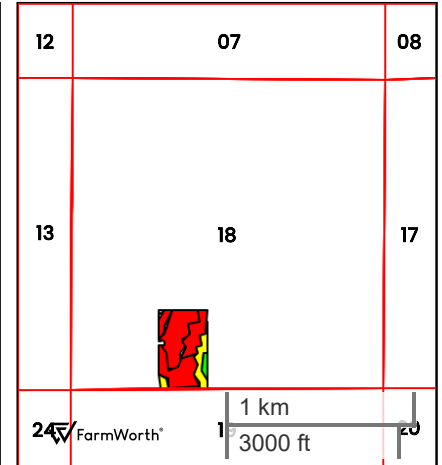
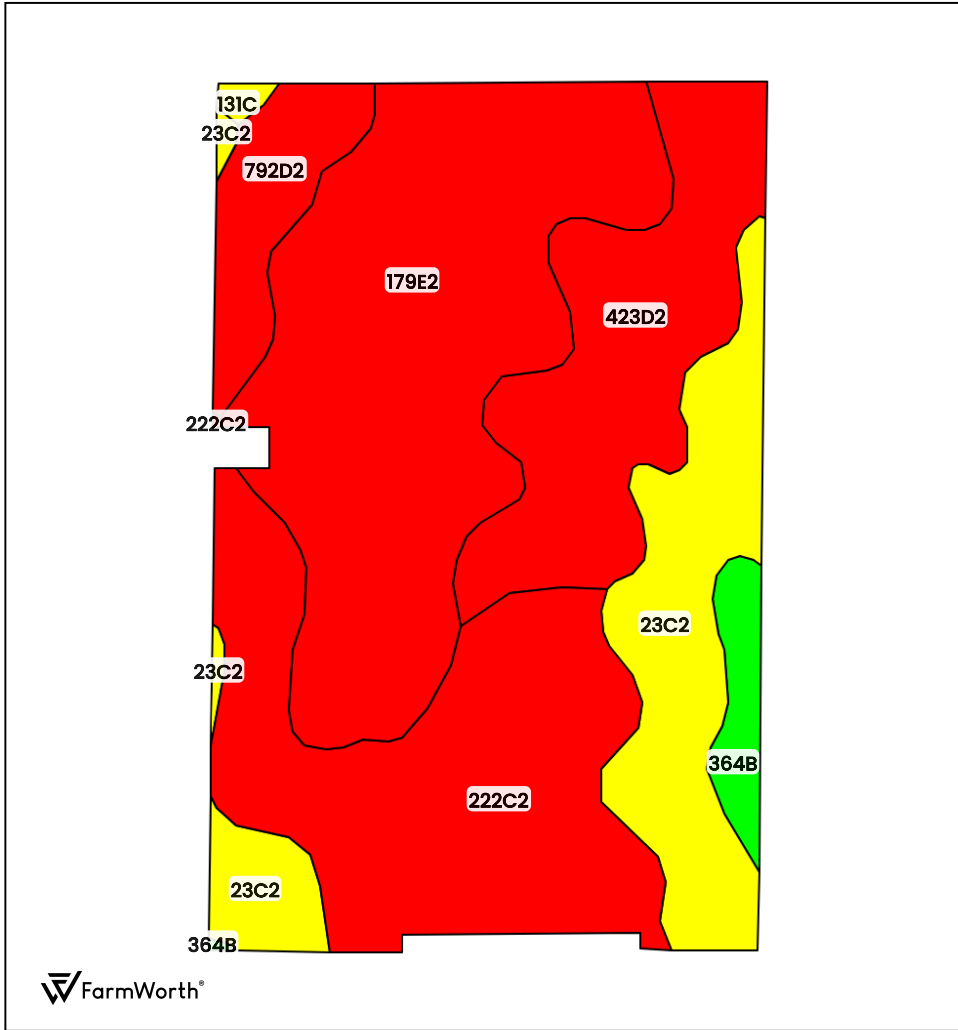
IA has updated the CSR values for each county to CSR2.

Soils data provided by USDA and NRCS.



24.71 ACRES (24.72 AC TOTAL, 24.71 AC TILLABLE)

TILLABLE SOILS



County: Lucas County, IA
 Location: 18-72N-21W
 Township: Chariton city
 Acres: 24.71
 Date: 09/08/2025



Field borders obtained from Farm Service Agency as of 2008

FarmWorth, LLC makes no representations or warranties, express or implied, as to the accuracy of any information, data, numerical values, boundaries, or any other information generated through the use of FarmWorth.com. User is solely responsible for independently investigating and determining all information provided through FarmWorth.com prior to use and waives any and all claims against FarmWorth, LLC for any inaccuracies or inconsistencies in the information and/or data.

Code	Description	Acres	% of field	IA CSR2	Overall NCCPI	Soil Class (Irr)	Soil Class (Non-Irr)	Drainage Class
179E2	Gara clay loam, 14 to 18 percent slopes, moderately eroded	8.35	33.78 %	23	62	-	6	Well drained
222C2	Clarinda silty clay loam, 5 to 9 percent slopes, moderately eroded	6.22	25.16 %	28	52	-	4	Poorly drained
423D2	Bucknell silty clay loam, 9 to 14 percent slopes, moderately eroded	4.07	16.46 %	6	62	-	4	Somewhat poorly drained
23C2	Arispe silty clay loam, 5 to 9 percent slopes, moderately eroded	4.06	16.42 %	62	76	-	3	Somewhat poorly drained
792D2	Armstrong clay loam, 9 to 14 percent slopes, moderately eroded	1.31	5.30 %	5	58	-	4	Somewhat poorly drained
364B	Grundy silty clay loam, 2 to 5 percent slopes	0.62	2.51 %	72	79	-	2	Somewhat poorly drained
131C	Pershing silt loam, 5 to 9 percent slopes	0.09	0.36 %	65	73	-	3	Somewhat poorly drained
Average:				28.3	62.0			

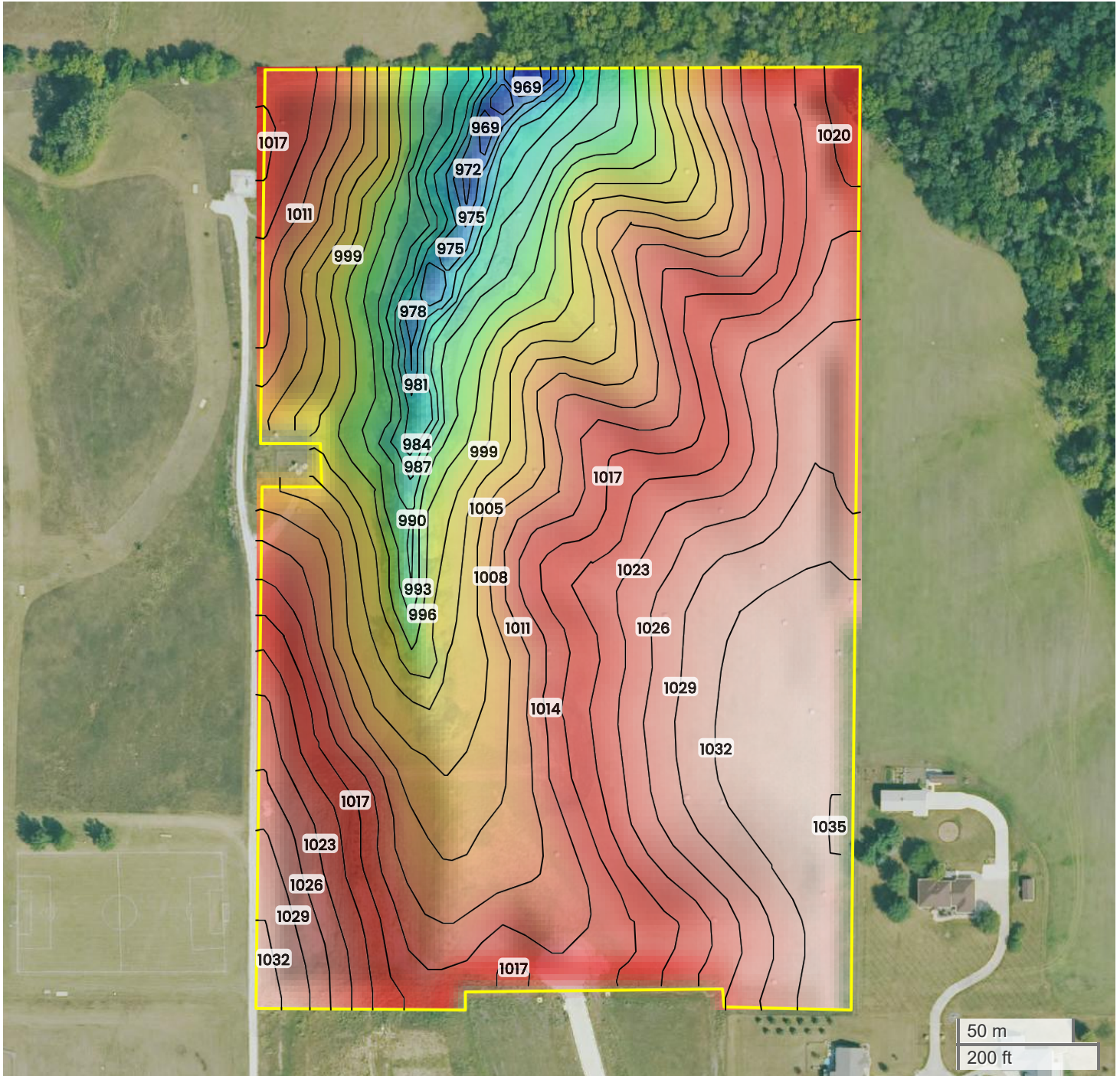
IA has updated the CSR values for each county to CSR2.

Soils data provided by USDA and NRCS.



24.71 ACRES (24.72 AC TOTAL, 24.71 AC TILLABLE)

TOPOGRAPHY



969 ft

1035 ft



Center: 41.030811, -93.320996

18-72N-21W

Chariton city Township

Lucas County, IA

Source: USGS 10m DEM

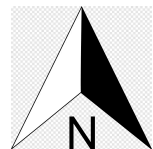
Interval(ft): 3

Max: 1035.0 ft

Min: 969.0 ft

Range: 66.0 ft

Average: 1002.0 ft



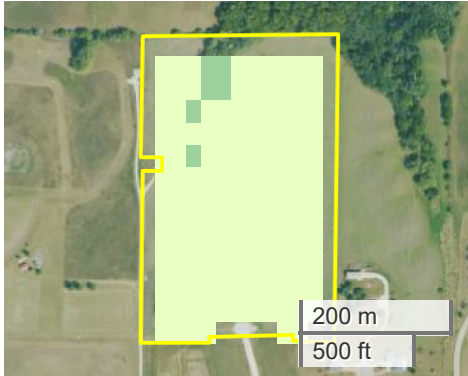
FarmWorth, LLC makes no representations or warranties, express or implied, as to the accuracy of any information, data, numerical values, boundaries, or any other information generated through the use of FarmWorth.com. User is solely responsible for independently investigating and determining all information provided through FarmWorth.com prior to use and waives any and all claims against FarmWorth, LLC for any inaccuracies or inconsistencies in the information and/or data.



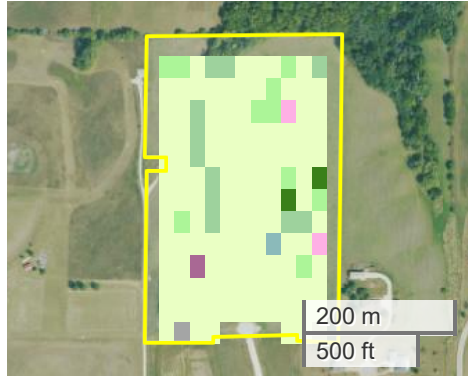
24.71 ACRES (24.72 AC TOTAL, 24.71 AC TILLABLE)

CROP HISTORY

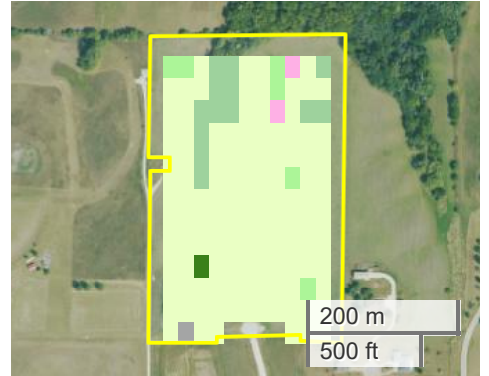
2024



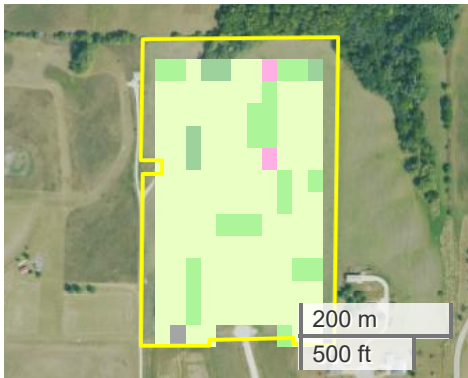
2023



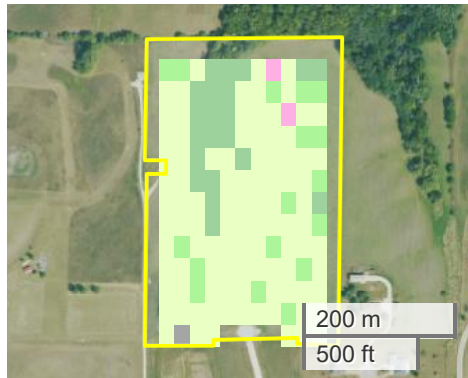
2022



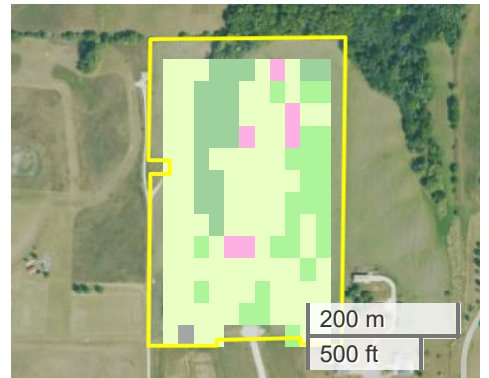
2021



2020



2019



Crop History

		Percent Area (>0.5 %)						
	Crop	2024	2023	2022	2021	2020	2019	Average
	Grass/Pasture	95.0	79.1	83.5	79.1	70.5	62.6	78.3
	Other Hay/Non Alfalfa	0.0	7.2	4.3	15.1	12.2	18.0	11.4
	Deciduous Forest	4.3	5.0	9.4	2.2	11.5	13.7	7.7
	Mixed Forest	0.0	2.9	0.0	1.4	3.6	0.7	2.2
	Alfalfa	0.0	1.4	1.4	1.4	1.4	4.3	2.0
	Soybeans	0.0	1.4	0.7	0.0	0.0	0.0	1.1

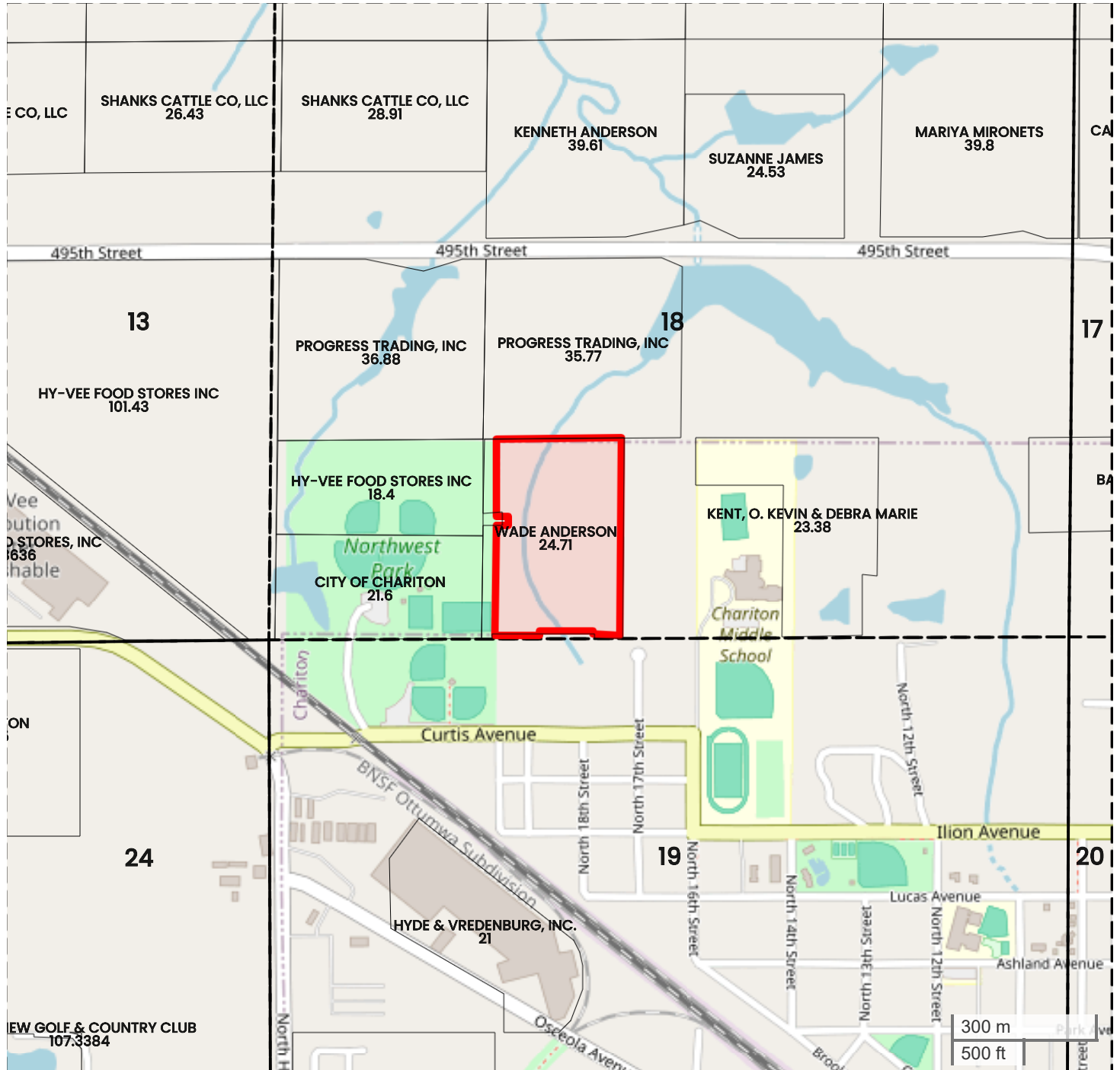


FarmWorth, LLC makes no representations or warranties, express or implied, as to the accuracy of any information, data, numerical values, boundaries, or any other information generated through the use of FarmWorth.com. User is solely responsible for independently investigating and determining all information provided through FarmWorth.com prior to use and waives any and all claims against FarmWorth, LLC for any inaccuracies or inconsistencies in the information and/or data.



24.71 ACRES (24.72 AC TOTAL, 24.71 AC TILLABLE)

PLAT MAP



Center: 41.030800, -93.320978

18-72N-21W

Chariton city Township

Lucas County, IA



FarmWorth, LLC makes no representations or warranties, express or implied, as to the accuracy of any information, data, numerical values, boundaries, or any other information generated through the use of FarmWorth.com. User is solely responsible for independently investigating and determining all information provided through FarmWorth.com prior to use and waives any and all claims against FarmWorth, LLC for any inaccuracies or inconsistencies in the information and/or data.



24.71 ACRES (24.72 AC TOTAL, 24.71 AC TILLABLE)

PROXIMITY MAP



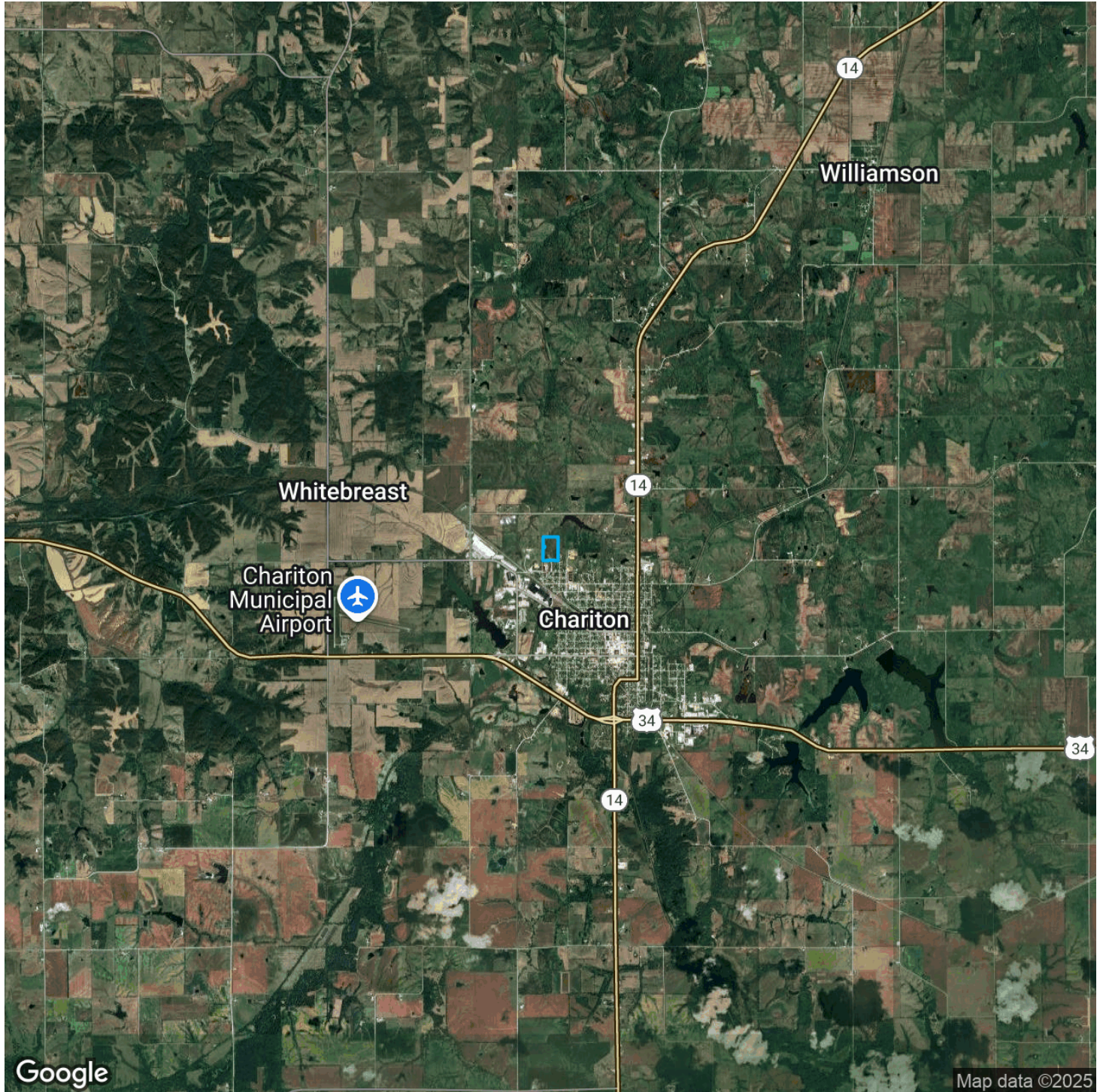
FarmWorth, LLC makes no representations or warranties, express or implied, as to the accuracy of any information, data, numerical values, boundaries, or any other information generated through the use of FarmWorth.com. User is solely responsible for independently investigating and determining all information provided through FarmWorth.com prior to use and waives any and all claims against FarmWorth, LLC for any inaccuracies or inconsistencies in the information and/or data.

 [Get Driving Directions](#)



24.71 ACRES (24.72 AC TOTAL, 24.71 AC TILLABLE)

REGIONAL MAP



FarmWorth, LLC makes no representations or warranties, express or implied, as to the accuracy of any information, data, numerical values, boundaries, or any other information generated through the use of FarmWorth.com. User is solely responsible for independently investigating and determining all information provided through FarmWorth.com prior to use and waives any and all claims against FarmWorth, LLC for any inaccuracies or inconsistencies in the information and/or data.

 [Get Driving Directions](#)



24.71 ACRES (24.72 AC TOTAL, 24.71 AC TILLABLE)

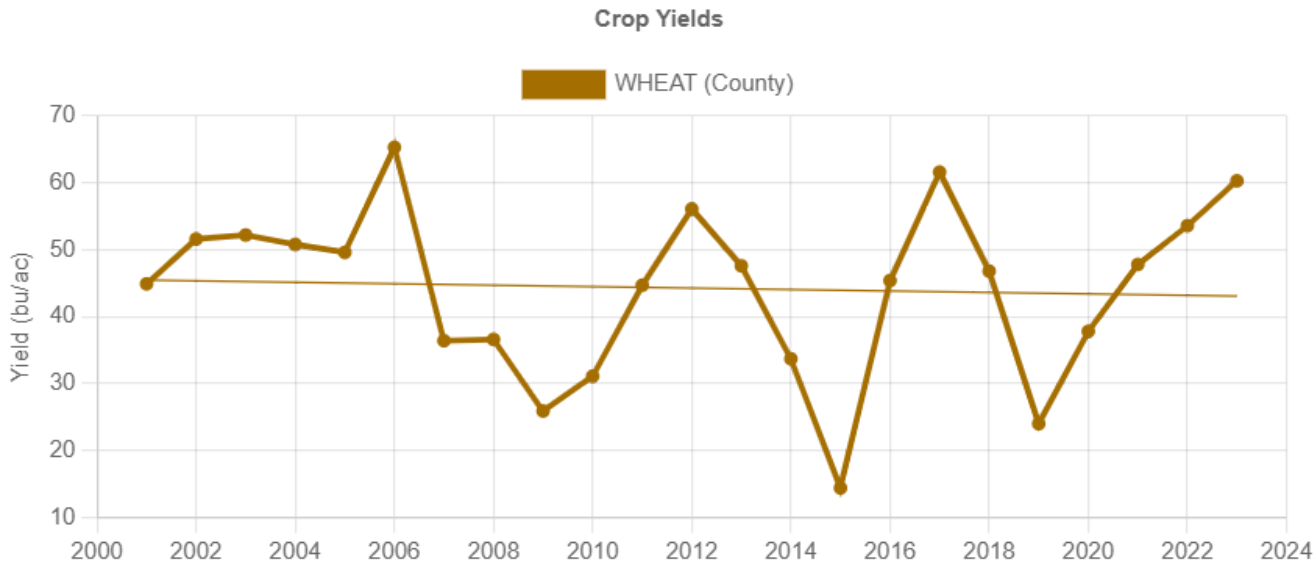
FARMLAND INSIGHTS

Farmland Statistics for Lucas County, IA for 2023

	Attribute	Year	Value
IA Average	Farmland Value (\$/ac)	2023	\$9,410
	Cash Rent (\$/ac)	2023	\$269
	Farmland Returns (%)	2023	9.05%
Lucas County Average	Price (\$/ac)	2023	\$4,346
	National Productivity Index (NCCPI3 All Crops)	2023	66
	CSR2	2023	41

RMA Statistics for Lucas County, IA for 2022

Top Crops	Year	Expected Yield (bu/ac)	APA Trend Adjustment (bu/year)
Wheat	2022	41.5	0
Corn	2022	138.5	1.68



FarmWorth* FarmWorth, LLC makes no representations or warranties, express or implied, as to the accuracy of any information, data, numerical values, boundaries, or any other information generated through the use of FarmWorth.com. User is solely responsible for independently investigating and determining all information provided through FarmWorth.com prior to use and waives any and all claims against FarmWorth, LLC for any inaccuracies or inconsistencies in the information and/or data.